



Voyage Compact Steamer

LX900T

Instruction Manual

Important

- Please read the product manual carefully before using this product and keep it in a safe place.
- This appliance has been designed for domestic use only. Any commercial use, inappropriate use or failure to comply with the instructions, the manufacturer accepts no responsibility and the guarantee will not apply.


Danger

- Never immerse the appliance in water or any other liquid, nor rinse it under the tap.
- Do not add liquids other than tap water, purified water or distilled water to the tank.

Warning

- Check if the voltage indicated on the appliance corresponds to the local mains voltage before you connect the appliance.
- Do not use the appliance if the plug, power cord or the appliance itself shows visible damage, or if the appliance has been dropped or leaks.
- Do not connect the appliance to a direct current supply.
- Always return the appliance to a service centre authorized by Electrolux for examination or repair. Do not attempt to repair the appliance yourself, otherwise the guarantee becomes invalid.
- If the power cord is damaged you must have it replaced by Electrolux, a service centre authorized by Electrolux or similarly qualified persons in order to avoid a hazard.
- Never leave the appliance unattended when it is connected to the mains.
- When you have finished steaming, when you fill or empty the water tank, when you perform cleaning and rinsing and when you leave the appliance even for a short while, remove the power cord from the wall socket
- Keep the appliance and its power cord out of reach of children.
- Children should be supervised to ensure that they do not play with the appliance cleaning and user maintenance shall not be made by children without supervision.
- Only connect the appliance to an earthed wall socket.
- Do not place the appliance on a surface with the steamer head touching the surface while the appliance is hot or connected to the mains.
- Do not let the power cord come into contact with hot steam when the appliance is in operation

- ### Caution

- | Part Name | The name and content of harmful substances in the product | | | | | |
|---------------------------|---|------|-----|----------|-------|---------|
| | (Pb) | (Hg) | (d) | (Cr(VI)) | (PBB) | (PBDEI) |
| Plastic parts | 0 | 0 | 0 | 0 | x | x |
| Hardware | 0 | 0 | 0 | x | 0 | 0 |
| Heating element | x | 0 | 0 | x | 0 | 0 |
| Water tank assembly | 0 | 0 | 0 | 0 | 0 | 0 |
| Circuit control component | x | 0 | 0 | 0 | x | x |
| Power cable | x | 0 | 0 | 0 | x | x |
| Annex | 0 | 0 | 0 | 0 | 0 | 0 |
- This form is prepared in accordance with the provisions of SJ/T11364.
- 0** "The content of the marked hazardous substances in all homogeneous materials of the modified parts is below the limit requirement specified in GB/T26572.
- X** "The content of the marked hazardous substances shall be at least in the content of a homogeneous material of the modified parts exceeding the limit requirement specified in GB/T26572.
- | | |
|---|---|
|  | The numerical indications in this logo indicate that the product has an environmentally friendly life of 10 years under normal use. |
|---|---|

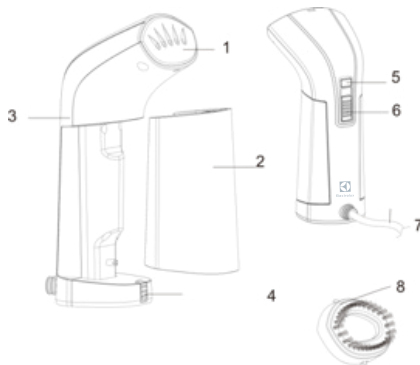
Instruction Manual

LX900T

Before use, please read the instruction carefully and store it properly.

Product Component Name

1. Steam panel
2. Water tank
3. Host
4. Water tank buckle
5. Power Indicator Lamp
6. Steam switch
7. Power cord
8. Long Brush



Ironing tips

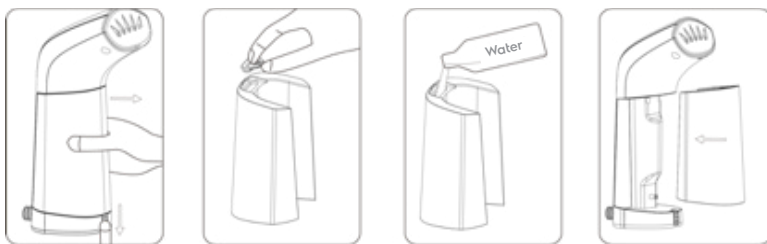
Steam hanging ironing machine is suitable for ironing wrinkled clothes, curtains and refreshing decorative fabrics. It can be used on most fabrics. Before use, please read the material label of the relevant clothing carefully to check whether it can be ironed. Some clothing such as leather, artificial leather, velvet and so on can not be ironed. (1) Before ironing, a small piece of internal clothing can be tested. If it does not cause damage, it can be ironed safely. (2) Check the air permeability behind the clothes, so as to avoid the steam gathering in the cloth to wet the clothes. (3) Check the pockets of clothes to make sure there are no items in the pockets. (4) Check the back of the clothes to see if there are any objects easily damaged by steam. (5) It is recommended not to use hanging ironing machine around the metal parts of clothing. High temperature steam may cause discoloration or rust of the metal parts. (6) When you press the steam button, you will feel the vibration and hear a slight buzzing sound, which is normal. (7) If the buzz of the scalding machine becomes louder and no steam is emitted, this indicates that there is a lack of water in the water tank. Please check the water level of the water tank and add water to the water tank.

Before each use

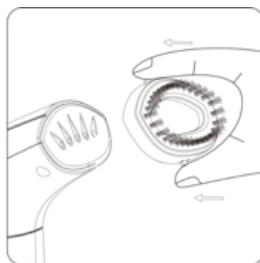
1. Remove the protective items on the surface of the machine, straighten and straighten out the power cord.
2. In order to avoid circuit overload, it is recommended to use it alone in a power outlet.

Operation and ironing

1. Water tank filling instructions: (1) Pull down the water tank dis assembly button and remove the water tank. (2) Open the nozzle cover and add tap water or pure water to ensure that at least one third of the water in the tank does not exceed the maximum water level. Put it back into the water tank.



2. Turn on the power supply and indicate the red light to turn on and preheat. After 30 seconds of preheating, the clothes can be ironed.
3. Description of hanging ironing clothes: (1) Hang clothes up, straighten the ironing area with one hand, and hold the machine with the other. (2) Turn on the steam switch, press the steam hole close to the clothes, and move the ironing from top to bottom.
4. Flat ironing instructions: (1) Place the clothes on the ironing board, one hand on the left side of the clothes, the other hand on the machine. (2) Turn on the steam switch and press the steam panel close to the clothes, moving from left to right.
5. Disassembling and assembly brush instructions: when there is hair or dust on clothing, the installation of brush can be a good dust removal, hair removal. When disassembling and assembling the brush, it is necessary to turn off the steam switch and cut off the power supply. (1) Remove the brush and pinch the stick point on the brush with your finger and take it out. (2) Install the brush and press the stick point of the brush into the steam nozzle with your finger.



After each use

1. Pour out the residual water inside the water tank, turn on the steam switch, and spray the water vapor inside the machine.
2. Turn off the steam switch and pull the power cord out of the outlet.
3. Place the machine on a flat desktop and wait for the product to be properly accepted after cooling

Nursing, cleaning and storage

- (1) Do not use rough or corrosive detergents or solvents. (2) Please do not immerse the steam scalding machine in water or other liquids. (3) Don't drop, throw it or try to bend it. (4) Please do not attempt to disassemble the decomposition products. (5) Empty the water tank after each use. (6) Avoid storing products in damp places. (7) Do not close to the heat source or let the sun shine directly on the product. (8) Always ensure that the steam outlet hole is clean, scale-free and not blocked. (9) It is recommended to store the ironing machine in a flat position, such as in a drawer.

Troubleshooting guide

Problem	Possible solutions
Hanging ironing machine does not heat	<ul style="list-style-type: none">• Check that the power plug is inserted into the power socket correctly.• Check whether the power supply is on.
Hanging ironing machine does not produce steam	<ul style="list-style-type: none">• Check whether there is enough water in the tank.• Turn on the steam switch.• Let the ironing machine stand upright.
Water leaks from the tank	<ul style="list-style-type: none">• Make sure that water does not exceed the maximum water level.• Make sure that the water intake of the water tank is closed correctly.• According to the operation instructions provided, always keep the hanging ironing machine in the upright position.
There was a loud buzz when the product was working	<ul style="list-style-type: none">• Check the water level; if there is no water or low water level, please add water to the tank.
Avoid discoloration of metal fittings on clothes	<ul style="list-style-type: none">• Do not directly use steam hanging ironing machine on metal parts.• Careful use of steam when metal fittings are around.

Warranty clause

When you need normal consultation, please contact us, and provide a warranty card or electronic order number, we will provide services free of charge; reflect the failure, tell the accurate fault phenomenon, we will serve you as soon as possible.

We offer a one-year warranty for our products. The warranty period is calculated from the date of purchase.

During the warranty period, we will replace the parts or the whole product according to the situation. The accessories of products, such as accessories, packaging, etc. are not covered by the warranty.

To apply for warranty, the product mainframe must be submitted to the designated maintenance point together with the certificates that can prove the purchase date (e.g. purchase certificate, invoice or network electronic order number, etc.).

The above warranty does not include the following:

- (1) Any damage caused by improper use (e.g. incorrect use of current, voltage, insertion of products into inappropriate sockets or man-made damage, etc.).
- (2) Faults caused by natural disasters.
- (3) Troubles caused by repairs by non-company maintenance personnel.
- (4) The product aging and wear caused by normal use, but it has little effect on the use function of the product.
- (5) The warranty service will be terminated immediately after the product has been repaired by unauthorized personnel or used parts not originally manufactured.
- (6) Other non-product problems and faults caused by external factors.

Within the scope of the law, the right of final interpretation of the above clauses belongs to our company.

Product warranty card

Product Model		Date of purchase	
Customer Name		Contact address	
Contact Number		Distributor name	
Maintenance records			
Maintenance Date	Troubleshooting	Location of maintenance	Result of maintenance
Please keep the warranty card properly in order to enjoy after-sales service.			

Main technical parameters

Product model: LX900T Water tank capacity: 110 ml Steam volume: 14 ± 3g/min

Quality + Sustainability

Your new Electrolux garment care supertool
is designed with sustainability in mind.



Concept

Our key design philosophy is to achieve top performance with the lowest energy demand.

Carefully calibrated power generates more steam with less electricity, which saves on runtime, yields smoother clothing in fewer passes, delivers a longer-lasting press, rejuvenates clothing to retain newness, and ultimately keeps energy and garments from waste.



Components

You only get out what you put in, so we insist on parts made with more sustainable materials and processes.

In line with the SDGs created by the UN, we use innovative materials that help both performance and planet, such as post-consumer rubber cords, repurposed plastics, and stainless steel that offer even edge-to-edge heating.



Package

This bag is for keeps. Made of the finest recycled materials, it features an original, reusable design.

Exclusive, heat-resistant neoprene enables you to safely store your garment care tool even while it's hot. Save space with this pliable, durable, and reusable bag that is easy to store anywhere in your home—far away from landfills.

Visit <https://www.electroluxgroup.com/en/> to learn more about our

Shape living for the better initiative



Electrolux

Questions comments?

Contact Smartekusa at 1-877-678-6232

**12 Hinsdale Street
Brooklyn NY 11207**

Electrolux is a registered trademark of AB Electrolux (publ.)