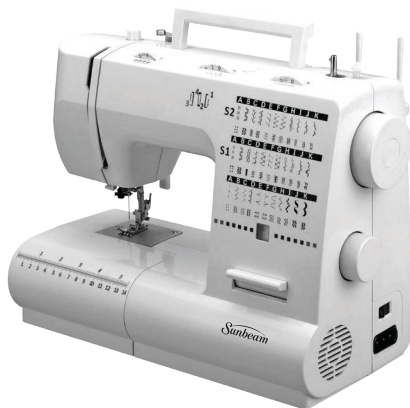




Domestic 70 Stitch Sewing Machine
Operating Instructions
Model No. SB700



Read all instructions carefully before using this item.
Keep this manual for future reference.

Contents

Safety instructions	03-04
Component identification	05-06
Accessories	07
Fitting the snap-in sewing table	08
Connecting machine to the power source	09
Two-step presser foot lever	10
Attaching the presser foot holder	11
Winding the bobbin	12
Inserting bobbin	13
Changing the needle	14
Threading the upper thread	15
Automatic needle threader	16
Thread tension	17
Bringing up the lower thread	18
Finishing up	19
Matching needle / fabric / thread	20-21
How to choose your pattern	22
Straight stitching and needle position	23
Zig-zag sewing	24
Blind hem / lingerie stitch	25
Overlock stitches	26
Sewing on buttons	27
Utility sewing	28
Zippers and piping	29
Sewing with the hemmer foot	30
3 step zig-zag	31
Stitch selection	32
Smocking stitch	33
Sewing with the cording foot	34
Free motion darning	35
Practical stitches	36
Darning	37
Attaching lace	38
Applique	39
Twin needle	40
Quilting	41
Gathering x-foot	42
Patch work	43
Maintenance	44
Troubleshooting guide	45-46

Safety instructions

When using an electrical appliance, basic safety precautions should always be followed, including the following:

Read all instructions before using this sewing machine.

DANGER - To reduce the risk of electric shock:

1. An appliance should never be left unattended when plugged in.
2. Always unplug this appliance from the electric outlet immediately after using and before cleaning.

Always unplug before re-lamping.
Replace bulb with same type rated 10 watts.

WARNING - To reduce the risk of burn, fire, electric shock, or injury to persons:

1. Do not allow to be used as a toy. Close attention is necessary when this appliance is used by or near children.
2. Use this appliance only for its intended use as described in this manual.
3. Never operate this appliance if it has a damaged plug or cord, if it is not working properly, if it has been

dropped or damaged or dropped into water.

4. Never operate this appliance with any air openings blocked. Keep ventilation openings of the sewing machine and foot controller free from accumulation of lint, dust and loose cloth.
5. Keep fingers away from all moving parts. Special care is required around the sewing machine needle.
6. Always use the proper needle plate. The wrong plate can cause the needle to break.
7. Do not use bent needles.
8. Do not pull or push fabric while stitching. It may deflect the needle causing it to break.
9. Switch the sewing machine off ("O") when making any adjustments in the needle area, such as threading needle, changing needle, threading bobbin, or changing presser foot, and the like.
10. Always unplug sewing machine from the electrical outlet when removing covers, lubricating, or when making any other user servicing adjustments mentioned in the instruction manual.

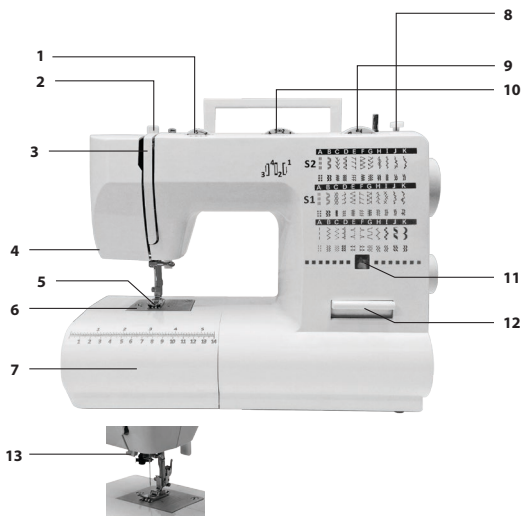
Safety instructions

11. Never drop or insert any object into any opening.
12. Do not use outdoors.
13. Do not operate where aerosol spray products are being used or where oxygen is being administered.
14. To disconnect, turn all controls to the off ("O") position, then remove plug from outlet.
15. Do not unplug by pulling on cord. To unplug, grasp the plug, not the cord.

SAVE THESE INSTRUCTIONS

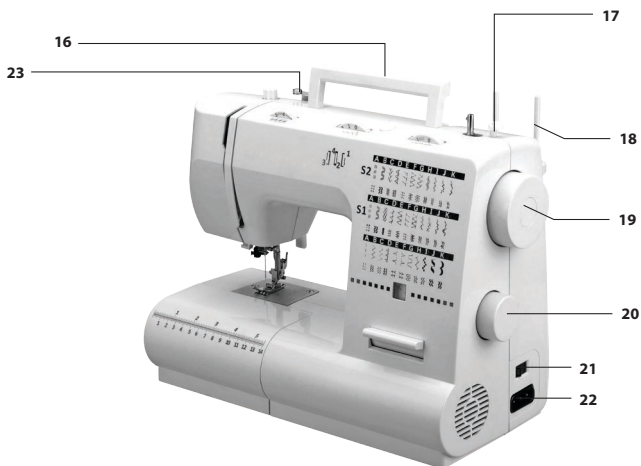
This sewing machine is intended for household use only.

Component identification (Part 1)



- | | |
|-----------------------------------|-----------------------------------|
| 1. Thread tension dial | 8. Bobbin stopper |
| 2. Presser foot pressure | 9. Stitch length dial |
| 3. Thread take-up lever | 10. Stitch width dial |
| 4. Thread cutting | 11. Stitch display |
| 5. Presser foot | 12. Reverse sewing lever |
| 6. Needle plate | 13. Automatic threader (optional) |
| 7. Sewing table and accessory box | |

Component identification (Part 2)



- 14. Upper thread guide
- 15. Presser foot lever
- 16. Handle
- 17. Bobbin winder
- 18. Spool pin
- 19. Handwheel
- 20. Pattern selector dial

- 21. Power switch
- 22. Main plug socket
- 23. Bobbin thread guide

Accessories

Standard Accessories (1)

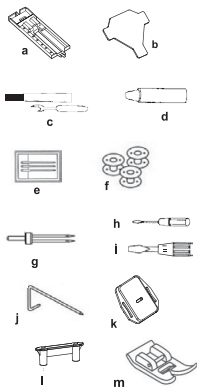
- a. 4 step buttonhole foot
- b. L shape screwdriver
- c. Seam ripper/brush
- d. Lubricate oil
- e. #14 needle x 3pcs (ORGAN brand)
- f. Bobbins x 3pcs in total
- g. Twin needle
- h. Screw driver (small)
- i. Screw driver (large)
- j. Edge/quilting guide
- k. Embroidering plate
- l. Spool holder
- m. All purpose foot

Optional Quilting Package (2)

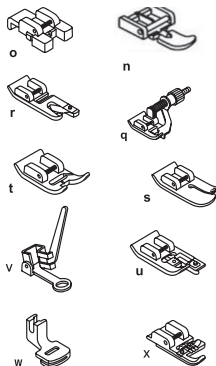
- n. Zipper foot with double edge
- o. Button sewing foot
- q. Blind hem foot
- r. Hemmer foot
- s. Quilting foot
- t. Stain stitch foot
- u. Overcasting foot
- v. Darning/embroidering foot
- w. Gathering foot
- x. Cording foot

(To order optional accessories, please call us at: 1- 877-678-6232).

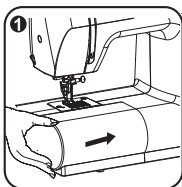
①



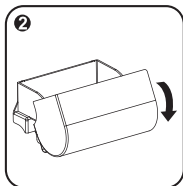
②



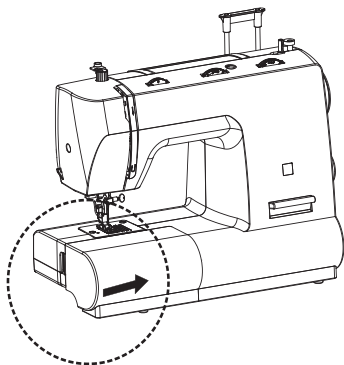
Fitting the snap-in sewing table



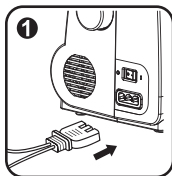
Hold the snap-in sewing table horizontal, and push it in the direction of the arrow. (Fig.1)



The inside of the snap-in sewing table can be utilized as an accessory box. To open, lift up at the point of the arrow. (Fig.2)

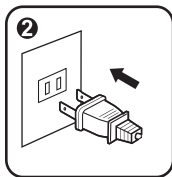


Connecting machine to power source



CAUTION:

Always make sure that the machine is unplugged from power source and the main switch is on (Off) "0" when the machine is not in use and before inserting or removing parts.

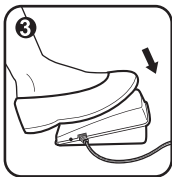


- This machine is equipped with polarized plug which must be used with an appropriate electrical outlet.
- Connect the machine to a power source as illustrated (1/2).

- The power switch is located above the terminal box. Your machine will not operate unless the switch is on "I". (1)

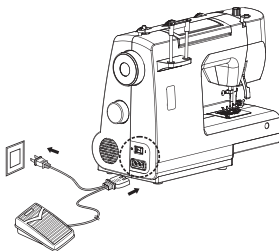
- Sewing light turns on automatically when the main switch is on "I".

- To start the machine, press the foot control (3). The speed of the machine is regulated by the amount of pressure exerted on the foot control.

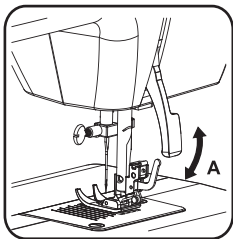


ATTENTION:

Consult a qualified electrician if in doubt as to connect the machine to power source. Unplug power cord when machine is not in use.

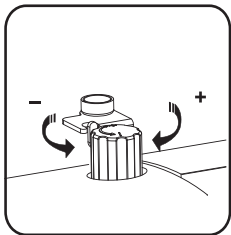


Two-step presser foot lever



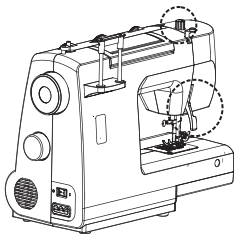
When sewing several layers or thick fabrics, the presser foot can be raised a second stage for easy positioning of the work. (A)

The presser foot pressure of the machine has been pre-set and requires no particular readjustment according to the type of fabric (light or heavy weight).

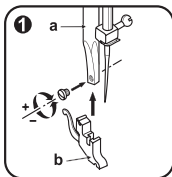


However, if you need to adjust the presser foot pressure, turn the presser foot pressure dial as shown above.

For sewing very thin fabric, loosen the pressure by turning the dial counter clockwise, and for heavy fabric, tighten by turning it clockwise.



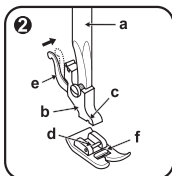
Attaching the presser foot holder



ATTENTION:

Turn power switch to "0" before carrying out any of the operations below.

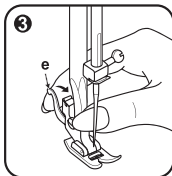
Raise the needle to its highest position and raise the presser foot lever. Attach the presser foot holder (b) to the presser foot bar (a). (1)



Attaching the presser foot:

Lower the presser foot holder (b) until the cut-out (c) is directly above the pin (d). (2)

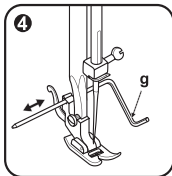
Lower the presser foot holder (b) and the presser foot (f) will engage automatically.



Removing the presser foot:

Raise the presser foot.

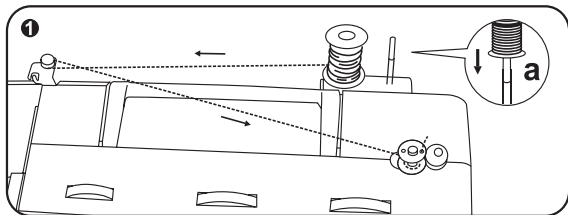
Release the pressure foot by raising lever (e) located at the back of the foot holder. (3)



Attaching the seam guide:

Attach the seam guide (g) in the slot as illustrated. Adjust the distance as required for hems, pleats, etc.... (4)

Winding the bobbin

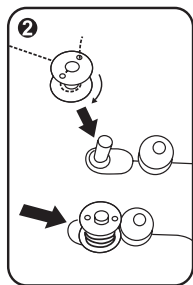


Place an empty bobbin winder spindle.

Take the thread from the spool through the bobbin winder tension disc. (1)

Wind the thread a few times by hand around the empty bobbin in a clockwise direction. Push the bobbin to the right towards the bobbin winding position. (2)

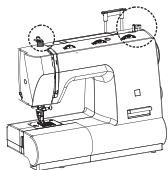
Press the foot control gently. The bobbin will stop winding when it is full. Push the bobbin to the left to "sewing position" and remove it.



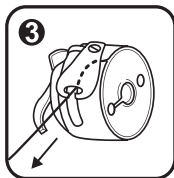
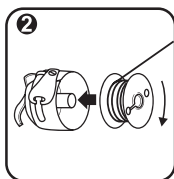
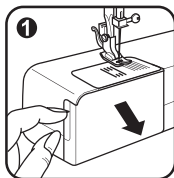
a. Spool pin

NOTE:

When the bobbin winder spindle is in "bobbin winding" position, the machine will not sew and the hand wheel will not turn. To start sewing, push the bobbin winder spindle to the left (sewing position).



Inserting bobbin

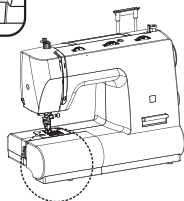
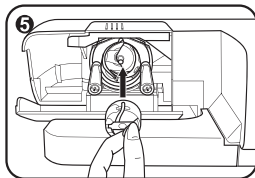


ATTENTION:

Turn power switch to (Off) "0" before inserting or removing the bobbin.

When inserting or removing the bobbin, the needle must be fully raised.

- Open the hinged cover. (1)
- Hold the bobbin case with one hand. Insert the bobbin so that the thread runs in a clockwise direction (arrow). (2)
- Pull the thread through the slot, down and to the left until it enters the delivery eyelet (rectangular opening) under the tension spring. (3)
- Hold the bobbin case by the hinged latch. (4)
- Insert the bobbin case fully into the shuttle race and release the latch. Make sure that the metal finger fits into the notch at the top of the race cover. (5)

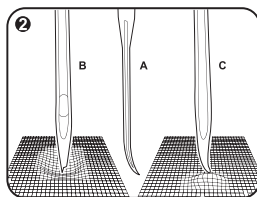
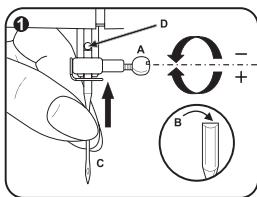


Changing the needle

CAUTION:

Turn power switch to (Off) "0" before inserting or removing the needle.

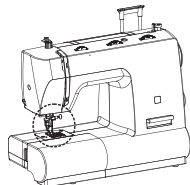
Replace the needle at the first sign of thread breakage or skipped stitches. Select the correct type and size of needle for the fabric to be sewn. Turn the balance wheel towards you until the needle is at highest position. Loosen the needle clamp screw (A) and tighten again after inserting the new needle. (1)



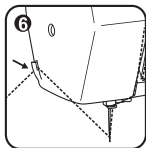
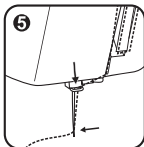
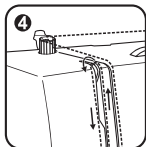
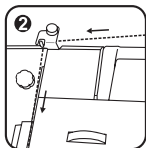
The flat side of the needle shaft should be facing away from you (B).

Push the needle up (C) into the needle clamp as far as it will go (D).

Tighten the needle clamp screw firmly. The sewing needle must always be straight and sharp for smooth sewing. Replace the needle (2) if it is bent (A), blunt (B) or the point is damaged (C).



Threading the upper thread

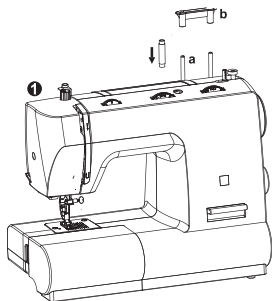


CAUTION:

Before threading, turn power switch to (Off) "0".

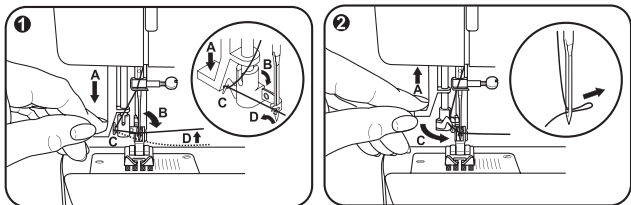
Raise the needle bar to its highest position. Follow exactly the numbered threading sequence illustrated below. If you skip a step or fail to properly engage the thread in any of the thread guides, the machine will not sew properly. (1-5)

Continue to draw the thread down and into the needle bar thread guide. Insert the thread through the eye of the needle from front to back. Leave about 10cm (4") of thread loose behind the needle. (6)



- a. Spool pin
- b. Spool holder

Automatic needle threader

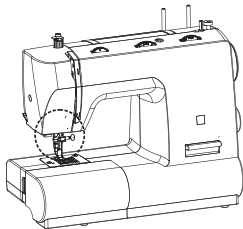


*The automatic needle threader is an optional accessory not supplied with your machine (to purchase call: 877-678-6232).

ATTENTION:

Turn power switch to (Off) "0" before carrying out any of the following:

- Raise the needle to its highest position.
- Press lever (A) right down.
- The threader automatically swings to the threading position (B).
- Take the thread around the hook (C).
- Take the thread in front of the needle round the hook (D) from bottom to top.
- Release lever (A).
- Pull the thread through the needle eye.



Thread tension

NOTE:

The bobbin thread tension has been adjusted at the factory and readjustment is usually not required.

Lower thread tension

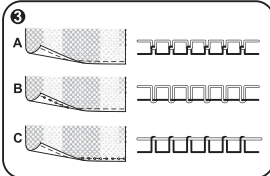
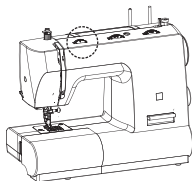
To test the bobbin thread tension, remove the bobbin case and bobbin from the machine and hold the bobbin case suspended by the thread. Shake it once or twice. If the tension is correct, the thread will unwind by about an inch or two. If the tension is too tight, it will not unwind. If the tension is too loose, the thread will unwind for more than two inches. To adjust, turn the small screw on the side of the bobbin case. (1)

Upper thread tension

Basic thread tension setting: "4". (2)

To increase the tension, turn the dial up to a higher number. To reduce the tension, turn the dial to a lower number.

- A. Normal thread tension.
- B. Thread tension too loose.
- C. Thread tension too tight.

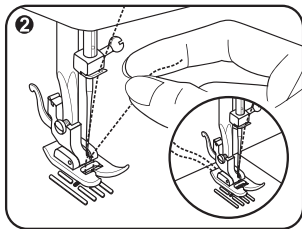
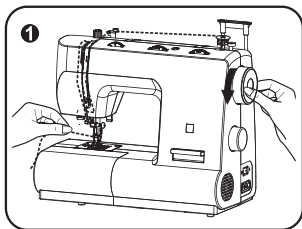


Bringing up the lower thread

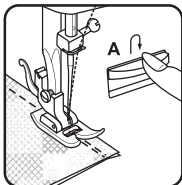
Hold the upper thread with the left hand. Turn the handwheel towards you with your right hand until the needle goes down and comes up again to its highest position. (1)

- Lightly draw the needle thread forming a loop with the bobbin thread. The upper thread should have caught the lower thread in a loop.

- Pull the needle thread toward you and the lower thread will come up from the bobbin in a large loop. (2) Pull about 15cm (6") of both threads away from you under the presser foot.

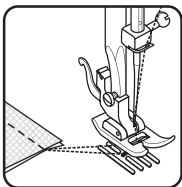


Finishing up



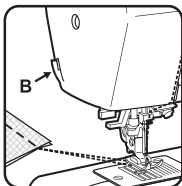
Reverse sewing

Reverse sewing is used for locking the end of seams and where reinforcement is needed. At the end of seam, press down the reverse sewing lever and touch the foot control lightly. Sew a few reverse stitches. Release the lever and the machine will sew forwards again. (A)



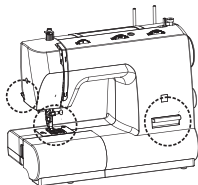
Removing the fabric

Turn the handwheel towards you to bring the thread take up lever to its highest position. Raise the presser foot and draw the fabric away from you.



Cutting the thread

Hold the threads behind the presser foot. Using both hands, guide them to the slit (B) at the rear of the presser bar and press down to cut the thread. You can also use the thread cutter on the side of the machine.



Matching needle / fabric / thread

NEEDLE SIZE	FABRICS	THREAD
9-11 (65-75)	Lightweight fabrics-thin cottons, voile, serge, silk, muslin, Qiana, interlocks, cotton knits, tricots, jerseys, drapes, woven polyester, shirt & blouse fabrics.	Light-duty thread in cotton, nylon or polyester.
12 (80)	Medium weight fabrics-cotton, satin, kettlecloth, sailcloth, double knits, lightweight woolens.	Most threads sold are medium size and suitable for these fabrics and needle sizes. Use polyester threads on synthetic materials and cotton on natural woven fabrics for best results. Always use the same thread on top and bottom.
14 (90)	Medium weight fabrics-cotton duck, woolen, heavier knits, terrycloth, denims.	
16 (100)	Heavyweight fabrics-canvas, woolens, outdoor tent and quilted fabrics, denims, upholstery material (light to medium).	
18 (110)	Heavy woolens, overcoat fabrics, upholstery fabrics, some leathers and vinyls.	Heavy duty thread, carpet thread. (Use heavy foot pressure-large numbers.)

IMPORTANT: Match needle size to thread size and weight of fabric.

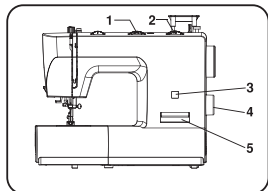
Matching needle / fabric / thread

NEEDLES	EXPLANATION	TYPE OF FABRIC
HAX 1 15x 1	Standard sharp needles. Sizes range thin to large. 9 (65) to 18 (110)	Natural woven fabrics-wool, cotton, silk, etc. Qiana. Not recommended for double knits.
15x 1/705H (SIN)	Semi-ball point needle, scarfed. 9 (65) to 18 (110)	Natural and synthetic woven fabrics, polyester blends. Knits-polyesters, interlocks, tricot, single and double knits. Can be used instead of 15x 1 for sewing all fabrics.
15x 1/705HS (SUK)	Full ball point needle, scarfed. 9 (65) to 18 (110)	Sweater knits, Lycra, swimsuit fabric, elastic.
130 PCL	Leather needles. 12 (80) to 18 (110)	Leather, vinyl, upholstery. Leaves smaller hole than standard large needle.

NOTE:

1. Twin needles, can be purchased for utility and decorative work.
2. When sewing with twin needles the stitch width dial should be set at less than "2.5".
3. European needles show sizes 65, 70, 80, etc. American and Japanese needles show size 9, 11, 12, etc.
4. Replace needle often (approximately every other garment) and / or at first thread breakage or skipped stitches.

How to choose your pattern

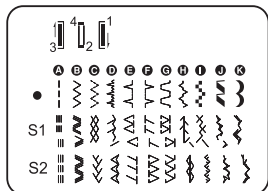


1. Stitch width dial
2. Stitch length dial
3. Stitch display
4. Pattern selector dial
5. Reverse sewing lever

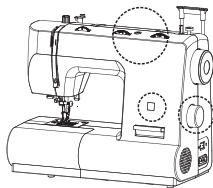
For **straight stitch** select pattern "A" with pattern selector dial (4). Adjust the stitch length dial (2). You may choose any needle position, by turning the stitch width dial (1).

For **zig-zag stitch**, select pattern "B" with pattern selector dial (4). Adjust the stitch length (2) and stitch width (1) according to the fabric being used.

To obtain any of the other patterns shown in the upper row on the stitch selection panel, select the letter above the stitch with the pattern selector dial. Adjust the stitch length and width with the control dials according to the result desired.

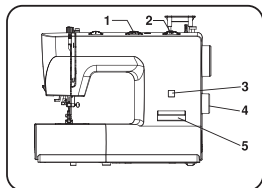


To obtain any of the patterns on the second row, turn the stitch dial to "S1", select the pattern desired with pattern selector dial, and adjust the stitch width with the stitch width dial.



To obtain any of the patterns on the third row, turn the stitch length dial to "S2", select the pattern desired with pattern selector dial, and adjust the stitch width with the stitch width dial.

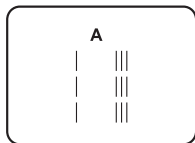
Straight stitching and needle position



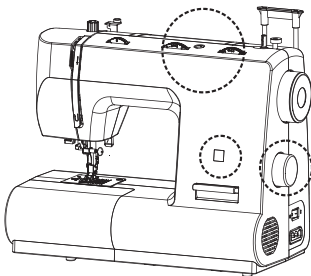
Turn the pattern selector dial so that the stitch display shows the straight stitch position.

Generally speaking, the thicker the fabric, thread and needle, the longer the stitch should be.

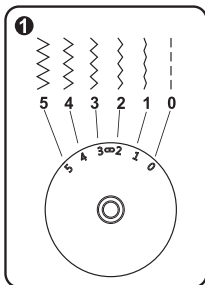
Choose your needle position, from left position to right needle position by changing the stitch width dial (1) from "0" to "5".



1. Stitch width dial
2. Stitch length dial
3. Stitch display
4. Pattern selector dial
5. Reverse sewing lever



Zig-zag sewing



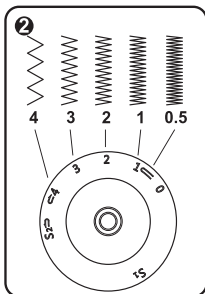
Turn the pattern selector dial to "B".

Function of stitch width dial

The maximum zig-zag stitch width for zig-zag stitching is "5"; however, the width increases as you move zig-zag dial from "0" - "5". For twin needle sewing, never set the width wider than "2.5". (1)

Function of stitch length dial while zigzagging

The density of zig-zag stitches increases as the setting of stitch length dial approaches "0". Neat zig-zag stitches are usually achieved at "2.5" or below. (2)

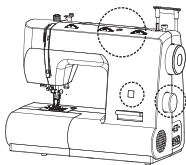


Satin stitch

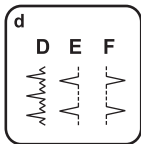
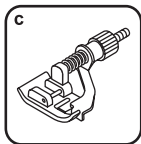
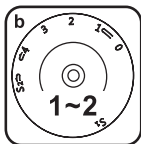
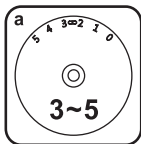
When the stitch length is set between "0" - "1", the stitches are very close together producing the "satin stitch" which is used for making buttonholes and decorative stitches.

Sewing thin fabrics:

When sewing very thin fabrics, it is suggested that you use interfacing on the backside of the fabric.



Blind hem / lingerie stitch



- a. Stitch width
- b. Stitch length
- c. Presser foot
- d. Stitch pattern

*The blind hem foot is a standard accessory.

~~~~~ Blind hem for stretch fabrics. Position "D" on selection dial.

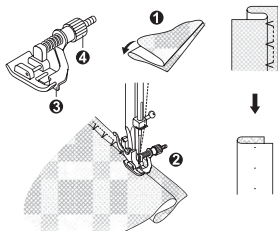
... Blind hem/lingerie for firm fabrics. Position "E" or "F" on selection dial.

Set the machine as illustrated.

### NOTE:

It takes practice to sew blind hems. Always make a sewing test first.

Fold the fabric as illustrated with the wrong side uppermost. (1) Place the fabric under the foot. Turn the handwheel forward by hand until the needle swings fully to the left. It should just pierce the fold of the fabric. If it does not, adjust the stitch width accordingly. (2) Adjust the guide (3) by turning the knob (4) so that the guide just rests against the fold. Sew slowly, by pressing the foot control lightly guiding the fabric along the edge of the guide.



## Overlock stitches

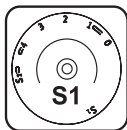



\*The overcasting foot is an optional accessory not supplied with your machine (to purchase call: 877-678-6232).

Seams, neatening, visible hems.

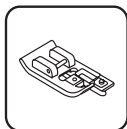
Turn the stitch length dial to "S1".

The stitch width can be adjusted to suit the fabric.



**Stretch overlock:** 

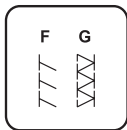
For fine knits, jerseys, neck edges, ribbing. (A)



**Double overlock stitch:** 

For fine knits, handknits, seams. (B)

All overlock stitches are suitable for sewing and neatening edges and visible seams in one operation.



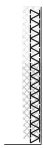
When neatening, the needle should just go over the edge of the fabric.

**ATTENTION:**

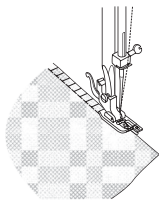
Use new needles or ball point needles or stretch needle.



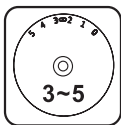
(A)



(B)



## Sewing on buttons

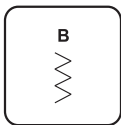
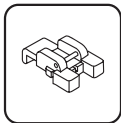


Install the embroidering plate to the needle plate as illustrated (1).

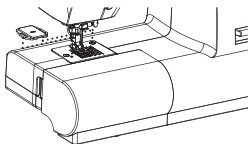
Change presser foot to button sewing foot.



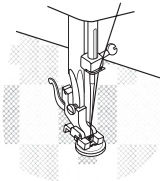
Position the work under the foot. Place the button in the desired position, lower the foot. Set the pattern selector knob on zig-zag stitch. Adjust the stitch width to "3" - "5" according to the distance between the two holes of the button. Turn the handwheel to check that the needle goes cleanly into the left and right holes of the button. Set the pattern selector knob on straight stitch, and sew a few securing stitches. Set the pattern selector knob on zig-zag stitch, and slowly sew on the button with about 10 stitches. Set the pattern selector knob on straight stitch and sew a few securing stitches (2).



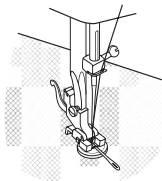
If a shank is required, place a darning needle on top of the button and sew (3). For buttons with 4 holes, sew through the front two holes first (2), push work forward and then sew through the back two holes (3).



①



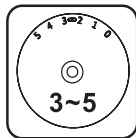
②



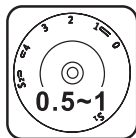
③

## Utility sewing

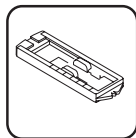
### PREPARE:



1. Take off the all purpose foot and attach the buttonhole foot.



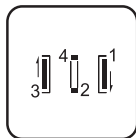
2. Measure diameter and thickness of button and add 0.3cm (1/8") for back tacks; mark buttonhole size on fabric.



3. Place fabric under the foot, so that marking on the buttonhole foot aligns with starting marking on fabric. Lower the foot, so that the buttonhole center line marked on the fabric aligns with the center of the buttonhole foot.

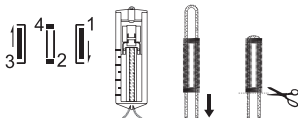
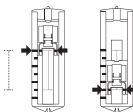
Adjust the stitch length dial between "0.5 - 1" to set stitch density.

### NOTE:

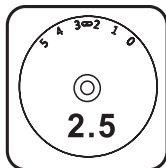


Density varies according to the fabric. Always test sew a buttonhole on the fabric you are using to sew the buttonhole.

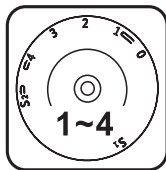
Follow the 4-step sequence changing from one step to another with the stitch pattern selector dial. Take care not to sew too many stitches in steps 2 and 4. Use seam ripper and cut buttonhole open from both ends towards the middle.



## Zippers and piping

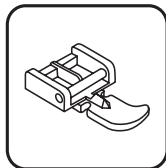


Set the machine as illustrated. Dial selector on "A". Set stitch length control between "1" - "4" (according to thickness of fabric).

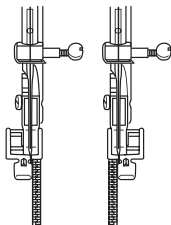
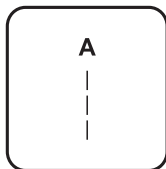


The zipper foot can be inserted right or left, depending on which side of the foot you are going to sew. (1)

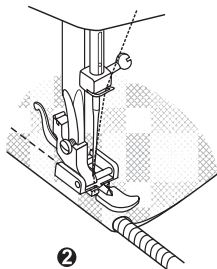
To sew past the zipper pull, lower the needle into the fabric, raise the presser foot and push the zipper pull behind the presser foot. Lower the foot and continue to sew.



It is also possible to sew in a length of cord, into a bias strip to form a "welt". (2)

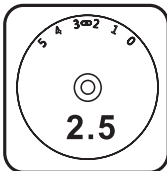


①



②

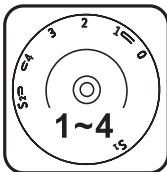
## Sewing with the hemmer foot



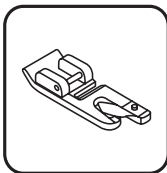
\*The hemmer foot is an optional accessory not supplied with your machine (to purchase call: 877-678-6232).

For hems in fine or sheer fabrics.

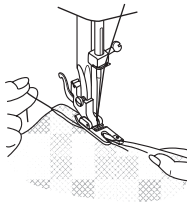
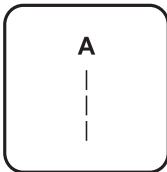
Set the machine as illustrated. Pattern selector on "A".



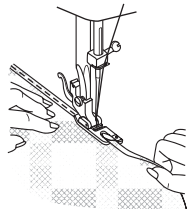
Neaten the edge of the fabric. At the beginning of the hem, turn under the edge twice by about 3mm (1/8") and sew 4-5 stitches to secure. Pull the thread slightly towards the back. Insert the needle into the fabric, raise the presser foot and guide the fold into the scroll on the foot. (1)



Gently pull the fabric edge towards you and lower the presser foot. Begin sewing, guiding the fabric into the scroll by holding it upright and slightly to the left. (2)

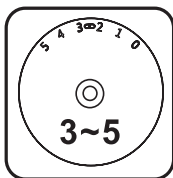


①



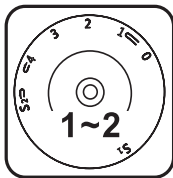
②

### 3 step zig-zag



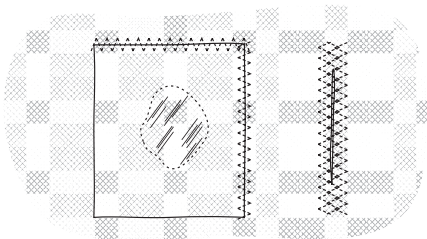
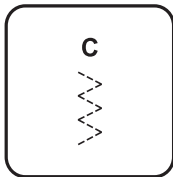
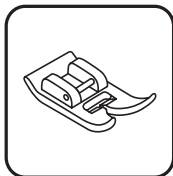
Sewing on lace and elastic, darning, mending, reinforcing edges.

Set the machine as illustrated. Pattern selector on "C".



Place patch in position. The stitch length can be shortened to produce very close stitches. (1)

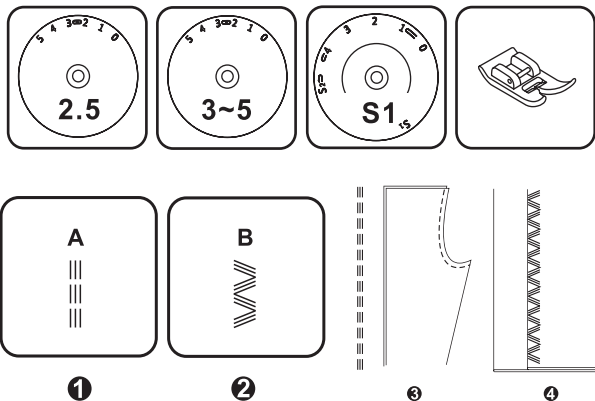
When mending tears, it is advisable to use a piece of backing fabric to reinforce. The stitch density can be varied by adjusting the stitch length. First sew over the center and then overlap on both sides. Depending on the type of fabric and damage, sew between 3 and 5 rows. (2)



①

②

## Stitch selection



Triple straight stitch: (1/3)

For hardwearing seams.

Pattern selector on "A".

Turn the stitch length dial to "S1".

The machine sews two stitches forward and one stitch backwards.

This gives triple reinforcement.

Triple zig-zag: (2/4)

For hardwearing seams, hems and decorative seams.

Pattern selector on "B".

Turn the stitch length dial to "S1".

Adjust the stitch width dial to between "3" and "5".

Triple zig-zag is suitable for firm fabrics like denim, corduroy, etc.



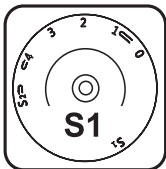
## Smocking stitch



Seams, hems, T-shirts, underwear, etc.

Set the machine as illustrated.

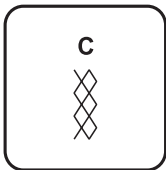
This stitch can be used for all types of jersey as well as for woven fabrics. (1)



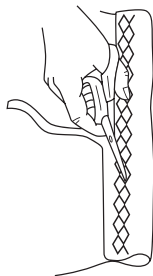
Sew at 1cm (1/4") from the fabric edge and trim the surplus fabric. (2)

Pattern selector on "C".

Turn the stitch length dial to "S1".



①



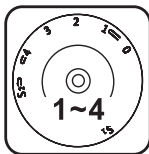
②

## Sewing with the cording foot



\*The cording foot is an optional accessory not supplied with your machine (to purchase call: 877-678-6232).

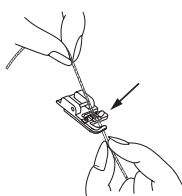
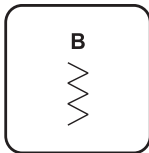
Decorative effects, cushions, tablecloths, etc.



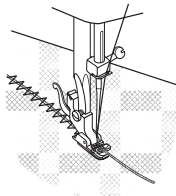
Set the machine as illustrated. Various stitches are suitable for sewing on cord, e.g. Zig-zag, Triple zig-zag, decorative stitches.



Insert the cord between the spring covering the cord groove and the foot. The cord should run in the groove. One, two or three cords can be sewn on. The stitch width is adjusted according to the number of cords and the stitch selected. (1/2)

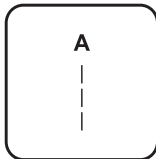
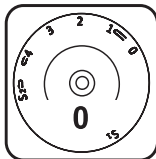
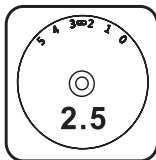


①



②

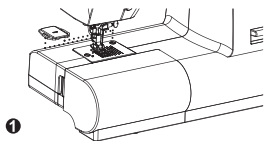
## Free motion darning



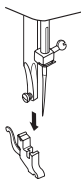
\*The darning foot is an optional accessory not supplied with your machine (to purchase call: 877-678-6232).

Set the machine as illustrated. Install the embroidering plate. (1) Remove the presser foot clamp. (2) Attach the darning foot to the presser foot bar. The lever (A) should be behind the needle clamp screw (B). Press the darning foot on firmly from behind with your index finger and tighten the screw (C). (3)

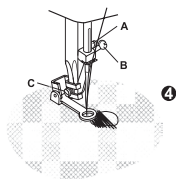
First sew round the edge of the hole (to secure the threads). (4) First row: Always work from left to right. Turn work by 1/4 and oversew. A darning ring is recommended for easier sewing and better results.



1



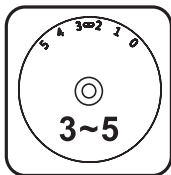
2



3

4

## Practical stitches



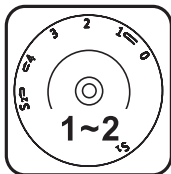
Set the machine as illustrated.

Turn the switch width dial and stitch length dial to suit the fabric.

### Shell hem (A)

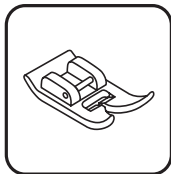
For decorative edges.

Suitable for edges on sheer, fine and stretch fabrics. The larger stitch should go just over the edge of the fabric to create the shell effect.



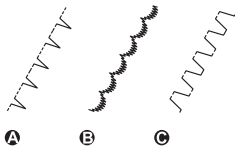
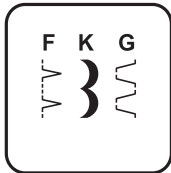
### Crescent stitch (B)

For a delicate edge finish along the edge of fabric. Stitch length should be set from "0.5" - "1.0".

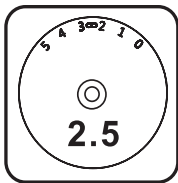


### Rampart (C)

For flat joining seams, sewing on elastic, visible hems. The stitch can be used for firm, thicker fabrics.



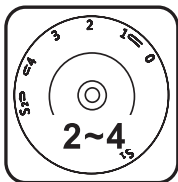
## Darning



- Turn stitch length dial to the desired length.

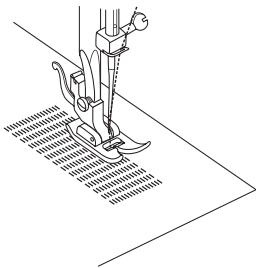
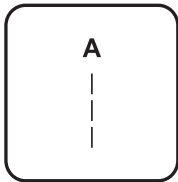
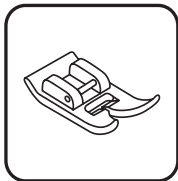
- Turn stitch selector to straight stitch, center needle position.

- Position the fabric to be darned under the presser foot together with the under laying fabric to be used.



- Lower the presser foot and alternately sew forward or reverse using the lever.

- Repeat this motion until the area to be darned is filled with rows of stitching.



## Attaching lace



- Turn stitch length dial to the desired stitch length.

- Turn stitch selector to straight stitch, center needle position.

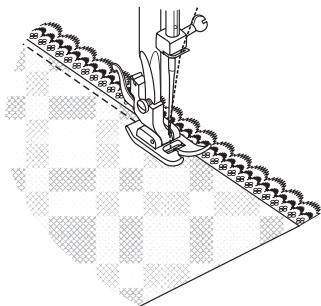
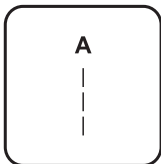
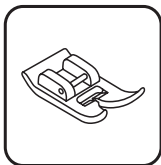
- Fold in the edge of the fabric approximately 6mm (1/4").



- Place the lace under the folded edge of the fabric allowing it to under lap the fabric slightly as required by the pattern of the lace.

- Sew on the edge of the fabric fold.

- You can add a decorative touch by using the satin stitch to sew the lace.



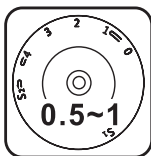
## Applique



- Turn stitch length dial to the desired length.

- Turn pattern selector dial to zig-zag.

- Select a narrow zig-zag width.



- Cut out the applique design and baste it to the fabric.

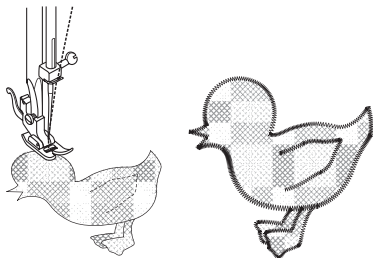
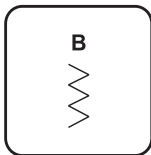
- Sew slowly around the edge of the design.

- Trim excess material outside the stitching. Make sure not to cut any stitches.

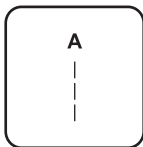
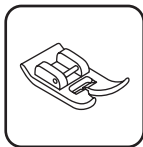
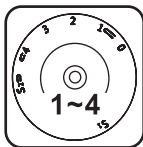
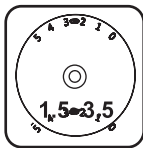


- Remove the basting thread.

- Tie top and bottom thread under the applique to avoid unraveling.



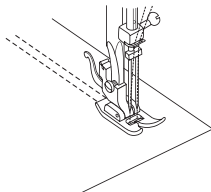
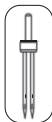
## Twin needle



- Turn stitch length dial to the desired stitch length.
- Turn stitch selector to straight stitch, center needle position, width setting "0".
- Make sure that the two threads used to thread the twin needle are of the same weight. You can use one or two colors.
- Insert the twin needle in the same way as single needle. Flat side of needle should face away from you.
- Follow instructions for single needle threading. Thread each needle separately.

### NOTE:

When sewing with twin needle, always proceed slowly, and make sure to maintain a low speed to ensure quality stitching. When using twin needle on zig-zag make sure the stitch width dial is set between "0" and "2.5". Do not use twin needle at setting above "2.5".





## Quilting

\*The quilting foot is an optional accessory not supplied with this machine (to purchase call: 877-678-6232).

Set pattern selector as illustrated.



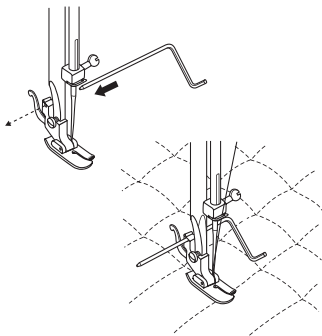
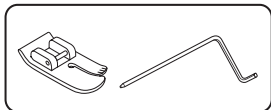
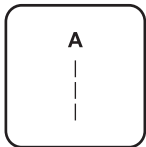
Insert the quilting guide in presser foot holder and set the space as you desired.



Move the fabric over and sew successive rows with the guide riding along on the previous row of stitching.

### NOTE:

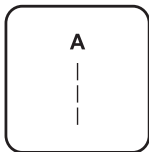
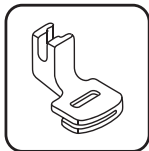
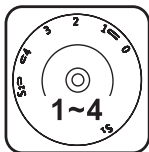
Presser foot shown is the optional quilting foot which does not come with your machine. If you have not purchased this foot substitute the all purpose foot.



## Gathering x-foot

\*The gathering foot is an optional accessory not supplied with this machine (to purchase call: 877-678-6232).

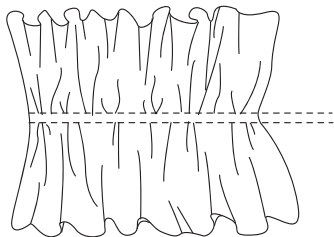
Set the pattern selector as illustrated.



1. Attach the gathering foot.
2. Sew a single row or multiple rows of straight stitches.
3. If more gathering is required, loosen the upper thread tension to below 2 so that the lower thread lies on the underside of the material.
4. Pull the lower thread to gather more of the material.

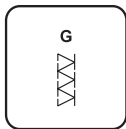
### NOTE:

Presser foot shown is the optional gathering foot which does not come with your machine. If you have not purchased this foot substitute the all purpose foot and gather fabric by hand by lowering the tension setting to below 2 and pulling the lower thread to gather the material.

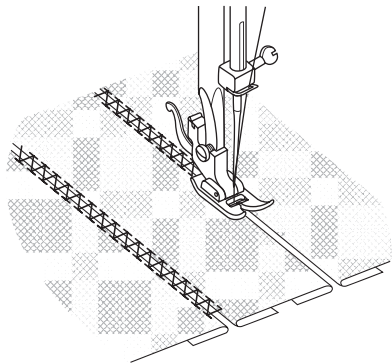


## Patch work

These stitches are used to join two pieces of fabric while leaving a space between their edges.



1. Fold over the edges of the two pieces of fabric for the hem and baste the edges to a thin piece of paper leaving a small space between them.
2. Set the Pattern selector on "G".  
Turn the stitch length dial to "S1".
3. Stitch along the edge, pulling both threads slightly when beginning to sew.  
\* Use thicker than normal threads for sewing.
4. After sewing, remove the basting and the paper. Finish by tying knots on the reverse side at the beginning and the end of the seams.



## Maintenance

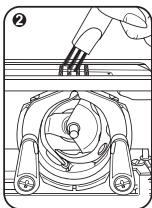


### CAUTION:

Always make sure that the machine is unplugged from power source and the main switch is on (Off) "0". When the machine is not in use and before inserting or removing parts.

### Remove the stitch plate:

Turn the handwheel until the needle is fully raised. Open the hinged front cover and unscrew the needle plate screw with the screwdriver. (Fig.1)

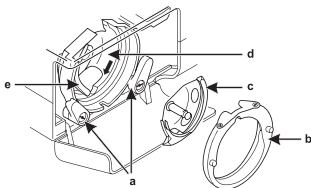


### Cleaning the feed dog:

Remove the bobbin case and use the brush supplied to clean the whole area. (Fig.2)

### Cleaning and lubricating the hook:

Remove the bobbin case. Snap the two hook retaining arms (a) outwards. Remove the hook race cover (b) and the hook (c) and clean with a soft cloth. Lubricate at the points (d) (1-2 drops) with sewing machine oil. Turn the handwheel until the hook race (e) is in the left position. Replace the hook (c). Replace the hook race cover and snap back the two hook retaining arms. Insert the bobbin case and bobbin and replace the stitch plate.



### IMPORTANT:

Fabric fluff and threads must be removed regularly based on occasional and frequent use.

## Troubleshooting guide

| PROBLEM             | CAUSE                                                                                                                                                                                                                                                                                                                                         | CORRECTION                                                                                                                                                                                                                                                                                                                       |
|---------------------|-----------------------------------------------------------------------------------------------------------------------------------------------------------------------------------------------------------------------------------------------------------------------------------------------------------------------------------------------|----------------------------------------------------------------------------------------------------------------------------------------------------------------------------------------------------------------------------------------------------------------------------------------------------------------------------------|
| Upper thread breaks | <ol style="list-style-type: none"> <li>1. The machine is not threaded correctly.</li> <li>2. The thread tension is too tight.</li> <li>3. The thread is too thick for the needle.</li> <li>4. The needle is not inserted correctly.</li> <li>5. The thread is round wound the spool holder pin.</li> <li>6. The needle is damaged.</li> </ol> | <ol style="list-style-type: none"> <li>1. Rethread machine.</li> <li>2. Reduce the thread tension (lower number).</li> <li>3. Select a larger needle.</li> <li>4. Remove and reinsert the needle (flat side towards the back).</li> <li>5. Remove the reel and wind thread onto reel.</li> <li>6. Replace the needle.</li> </ol> |
| Lower thread breaks | <ol style="list-style-type: none"> <li>1. The bobbin case is not inserted correctly.</li> <li>2. The bobbin case is not correctly threaded.</li> <li>3. The lower thread tension is too tight.</li> </ol>                                                                                                                                     | <ol style="list-style-type: none"> <li>1. Remove and reinsert the bobbin case and pull on the thread. The thread should pull easily.</li> <li>2. Check both bobbin and bobbin case.</li> <li>3. Loosen lower thread tension as described.</li> </ol>                                                                             |
| Skipped stitches    | <ol style="list-style-type: none"> <li>1. The needle is not inserted correctly.</li> <li>2. The needle is damaged.</li> <li>3. The wrong size needle has been used.</li> <li>4. The foot is not attached correctly.</li> </ol>                                                                                                                | <ol style="list-style-type: none"> <li>1. Remove and reinsert needle (flat side towards the back).</li> <li>2. Insert a new needle.</li> <li>3. Choose a needle to suit the thread and fabric.</li> <li>4. Check and attach correctly.</li> </ol>                                                                                |
| Needle breaks       | <ol style="list-style-type: none"> <li>1. The needle is damaged.</li> <li>2. The needle is not correctly inserted.</li> <li>3. Wrong needle size for the fabric.</li> <li>4. The wrong foot is attached.</li> </ol>                                                                                                                           | <ol style="list-style-type: none"> <li>1. Insert a new needle.</li> <li>2. Insert the needle correctly (flat size towards the back).</li> <li>3. Choose a needle to suit the thread and fabric.</li> <li>4. Select the correct foot.</li> </ol>                                                                                  |

## Troubleshooting guide

| PROBLEM                      | CAUSE                                                                                                                                                                                                                                       | CORRECTION                                                                                                                                                                                                                                 |
|------------------------------|---------------------------------------------------------------------------------------------------------------------------------------------------------------------------------------------------------------------------------------------|--------------------------------------------------------------------------------------------------------------------------------------------------------------------------------------------------------------------------------------------|
| Loose stitches               | <ol style="list-style-type: none"> <li>1. The machine is not threaded correctly.</li> <li>2. The bobbin case is not correctly threaded.</li> <li>3. Needle/fabric/thread combination is wrong.</li> <li>4. Thread tension wrong.</li> </ol> | <ol style="list-style-type: none"> <li>1. Check the threading.</li> <li>2. Thread the bobbin case as illustrated.</li> <li>3. The needle size must suit the fabric.</li> <li>4. Correct the thread tension.</li> </ol>                     |
| Seams gather or pucker       | <ol style="list-style-type: none"> <li>1. The needle is too thick for the fabric.</li> <li>2. The stitch length is adjusted incorrectly.</li> <li>3. The thread tension is too tight.</li> </ol>                                            | <ol style="list-style-type: none"> <li>1. Select a finer needle.</li> <li>2. Readjust the stitch length.</li> <li>3. Loosen the thread tension.</li> </ol>                                                                                 |
| Uneven stitches, uneven feed | <ol style="list-style-type: none"> <li>1. Poor quality thread.</li> <li>2. The bobbin case is not correctly threaded.</li> <li>3. Fabric has been pulled.</li> </ol>                                                                        | <ol style="list-style-type: none"> <li>1. Select a better quality thread.</li> <li>2. Remove bobbin case, rethread and insert correctly.</li> <li>3. Do not pull on the fabric while sewing, let it be taken up by the machine.</li> </ol> |
| The machine is noisy         | <ol style="list-style-type: none"> <li>1. The machine must be lubricated.</li> <li>2. Fluff or oil have collected on the hook or needle bar.</li> <li>3. Poor quality oil has been used.</li> <li>4. The needle is damaged.</li> </ol>      | <ol style="list-style-type: none"> <li>1. Lubricate as described.</li> <li>2. Clean the hook and feed dog as described.</li> <li>3. Only use good quality sewing machine oil.</li> <li>4. Replace the needle.</li> </ol>                   |
| The machine jams             | <ol style="list-style-type: none"> <li>1. Thread is caught in the hook.</li> </ol>                                                                                                                                                          | <ol style="list-style-type: none"> <li>1. Remove the upper thread and bobbin case, turn the handwheel backwards and forwards by hand and remove the thread remains. Lubricate as described.</li> </ol>                                     |

## 1 Year Limited Warranty

The SB700 Domestic 70 Stitch Sewing Machine is warranted for 1 year from provable date of purchase against defects in material and workmanship. During this period such defects will be repaired, or the product will be replaced without a charge.

This warranty does not cover damage caused by misuse, negligence or improper installation. Warranty is also invalid in any case that the product is taken apart or serviced by an authorized service station.

### TO CLAIM

Purchaser must receive a Return Authorization Number by calling our service center at **1-877-678-6232**.

Once your return has been authorized, please send your package, postage prepaid, with a copy of your proof of purchase. You will also need to enclose a letter explaining the nature of your difficulty in detail. Please allow 2-4 weeks for return shipping.

***Smartek USA Inc.***

***49 Bartlett Street Brooklyn, NY 11206***

***1-877-678-6232***

***Sunbeam™ is a trademark of Sunbeam Products, Inc.  
used under license.***