



Mighty Steam Cleaner Operating Instructions



Model No. SB80

Read all instructions carefully before using this item.
Keep this manual for future reference.

Sunbeam® Mighty Steam Cleaner

CONGRATULATIONS

Congratulations on your new purchase. The Sunbeam® SB80 is an amazing handheld steam cleaner appliance that combines the cleaning power of pressurized steam with detergent to get rid of stains faster, easier and with less hassle than traditional methods.

IMPORTANT SAFEGUARDS

When using your steam cleaner, you must use basic safety precautions, including but not limited to the following:

1. Read all instructions before using your steam cleaner. This appliance is intended for household use only.
2. Follow all user instructions in this manual. Use your steam cleaner only for its intended use.
3. Do not immerse any part of your steam cleaner in water or other liquids to protect against a risk of electric shock.
4. To disconnect from outlet, grasp plug and pull from there-never yank cord.
5. Do not allow cord to touch any hot surface. Allow the system to completely cool before putting it away or opening water tank by removing the safety cap.
6. When filling or emptying water from your steam cleaner, always disconnect system from electrical outlet. Always unscrew the safety cap slowly when opening the water tank to allow any remaining steam to escape gradually.

IMPORTANT SAFEGUARDS

7. Do not attempt to use your steam cleaner if it has a damaged cord or plug, or if the appliance or any other part of the system has been dropped or damaged. To avoid the risk of electric shock, do not disassemble or attempt to repair the steam cleaner. Instead, return the system to the seller immediately. Incorrect re-assembly or repair puts persons at risk of electrical shock or injury when using steam cleaner.
8. Do not leave the system in use without surveillance or in the presence of children.
9. Burns can occur from touching hot metal parts, hot water, or steam. Use caution when draining unit after use, as there may still be hot water in the unit. The steam is very hot and can cause burns. Never direct steam at any person.
10. Do not operate in the presence of explosive and/or flammable fumes.
11. Never use any chemicals or substance other than water in the upper portion of the steam cleaner. Chemicals will damage the machine and the use of these will automatically void your warranty.
12. Never direct steam at any electrical appliance (TV, radio, electrical oven).
13. Do not operate without shoes.

IMPORTANT SAFETY INSTRUCTIONS

SAVE THESE INSTRUCTIONS

1. To avoid circuit overload, do not operate appliance on the same socket circuit you are simultaneously using for other appliances.
2. Do not leave steame cleaner unattended when plugged in.
3. Use only heavy-duty, high rated extension cord.

ATTENTION: This appliance is equipped with a 3 prong grounded power cord. Insert the 3 prong grounded plug into a 3 prong ground power outlet. Do not try to remove the contacts off the grounded connection.

CAUTION: This product is not designed to be disassembled. Any attempt to take your steam cleaner apart will cause damage.

Do not leave the steam cleaner unattended.

DESCRIPTION OF THE APPLIANCE



DESCRIPTION OF THE APPLIANCE

1. Refill Cup



2. Angled Nozzle

For door, grooves, appliances, and reaching into small areas.



3. Nylon & Metal Brush

Perfect for scrubbing countertops, stovetops, grills, vents, and tiles.



4. Extended Connecting Spray Nozzle

For hard-to-reach areas.



5. Window Squeegee

Works on windows, glass, countertops, doors, vertical and slick surfaces.



6. Cloth Cover

Best for stain removal from upholstery and carpets.



7. Uphostery Nozzle

Perfect for clothing, fabrics, stair removal, drapes, cabinets, and larger areas.



These accessories are included with your steam cleaner.

INSTRUCTIONS

The Mighty Steam Cleaner can clean and remove stains in most types of surfaces designed to withstand high temperatures such as marble, ceramic, stone sealed wood, sealed grout, cook tops, windows, mirrors, etc.

1. Remember that the steam cleaner can be used as a steam cleaner or can be used as a clothing.
2. The STEAM ONLY function has a high degree of cleaning and degreasing steam power. This pure steam power can assist in the removal of dirt, grease and grime on a wide variety of surfaces.
3. The power offered by the STEAM ONLY function can also remove wrinkles from clothing, draperies, and other cloth items that are not harmed by moisture.
4. The STEAM ONLY function is also effective in cleaning hard to reach or detailed surfaces like exhaust filters oven stoves, outdoor furniture, outdoor grills, golf clubs, and other similar items.
5. By adding dish detergent you enhance the pure steam capabilities by adding stain and grease removing power that your dish detergent provides to your cleaning tasks.
6. DO NOT USE the steam cleaner on unsealed wood surfaces, unsealed ground, cold glass or soft plastic surfaces.

HOW TO USE THE STEAM CLEANER

FILLING THE WATER COMPARTMENT

WARNING: Carefully read all instructions before unscrewing the pressurized cap.

WARNING: Always unplug the appliance before filling the water compartment.

WARNING: Do not add any other kind of detergents, perfumes, oils, or chemical substances to the water. Use tap water or distilled water if tap water is too hard.

FOLLOW THESE INSTRUCTIONS TO AVOID WATER FROM OVERFLOWING:

STEP 1: Filling the steam cleaner with water

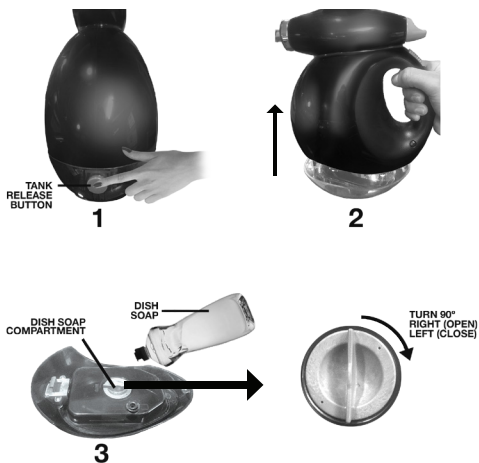
- To open press down the Pressurized Cap and turn counter clockwise.
- Fill the Refill Cup with water (10 oz./300 ml) and fill the upper tank. **DO NOT LET WATER OVERFLOW.**
- Replace Pressurized Cap by pressing down and turning clockwise until complete resistance is felt. When you have finished tightening it, the cap will popup and spin freely.



HOW TO USE THE STEAM CLEANER

STEP 2: Filling the steam cleaner with detergent

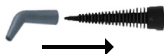
- A. The separate dish detergent tank can be filled by pressing the release button on the front of the unit while simultaneously pulling the base up. (as shown in 2)
- B. Unscrew the pressurized cap sealing the compartment and fill with detergent. You may fill the reservoir to the top or with as much dish detergent as you want.
- C. Re-seal the dish detergent compartment and re-attach the tank to the bottom of the steam cleaner.



HOW TO USE THE STEAM CLEANER

STEP 3: Attaching Accessories to your Steam Cleaner

- A. After filling your steam cleaner with water, choose the parts you will need for the job you are doing.
- B. Based on the job, attach the Bayonet Tip to the Extension Hose or directly to your steamer.
- C. All attachments can be attached to either the Bayonet Tip or the Extension Hose.
- E. The Nylon Round Brush and Angled Nozzle can be attached to the Bayonet Tip by pressing and turning until snug.



Bayonet plus other accessories.

Perfect to extend your steam cleaner's reach.



Metal & Nylon Round Brush

WARNING: Metal Brush will scratch surfaces.

Only use to remove tough debris on surfaces able to withstand abrasive contact.

HOW TO USE THE STEAM CLEANER

- E. To use the Window Cleaning attachment it must be clipped into the Fabric Accessory. Hook the hinges onto the tabs and lift the the window cleaner around to the top of the fabric tool and clip the latch onto the fabric cleaner to secure in place. To remove the window cleaner, simply lift the latch to unclip and separate.



WARNING:

Using window cleaner on cold glass may cause the glass to crack or break. Please proceed with caution when carrying out this operation.

- F. To use the Fabric Accessory, stretch the Cloth Covering to fit over it. It is recommended that the Fabric Accessory be attached to the flexible hose for maximum accessibility for clothing, upholstery & window furnishings.



HOW TO USE THE STEAM CLEANER

STEP 3: Starting the steam cleaner

- A. Insert the plug into a 3 prong grounded wall socket. A red light on the lower side of the steam cleaner's handle will glow signaling that the appliance is heating up. A green light right below the red one will also light up to signal that the appliance is working.

NOTE: The red light is designed to show you that the appliance has not yet reached its required temperature for use. When it is ready, the red light will turn OFF. The green light will stay on as long as the appliance is plugged into an outlet.

- B. The steam cleaner should be ready to steam in 3-5 minutes. You may fill it with warm water for faster starting time.
- C. After 3-5 minutes, when the red light has turned OFF, you are ready to go.

WARNING: Never leave your steam cleaner unattended.

- D. To engage the STEAM ONLY function, simply press the Steam Lever downward and hold in position.
- E. To engage the steam with dish detergent cleaning and pressurized steam power, slide the release button on the handle to the down position before pressing the Steam Lever.

HOW TO USE THE STEAM CLEANER



“Button Up: Detergent “OFF”

“Button Down: Detergent “ON”

NOTE: Please be aware that when on Detergent function, the steam output may appear more humid. That is normal because the hot steam gets mixed with the dish detergent product and as a result the steam will appear thicker.

HELPFUL TIPS

- A. Keep in mind that you can choose to either clean with pure steam or add the power of dish detergent to deodorize and clean thoroughly.
- B. For especially stubborn stains or heavy soiling, hold the end of the Bayonet Tip about 1/4” above the area for several seconds and blast with steam.
- C. If your water is hard, always use distilled water to extend the life and power of your appliance.

HOW TO USE THE STEAM CLEANER

REFILLING YOUR STEAM CLEANER

WATER

- A. Unplug the power cord from the electrical outlet.
- B. Press and hold Steam Lever until all pressure has been released.
- C. Before opening the Pressurized Water Tank Cap it is important to wait approximately 3 minutes (or more depending on how long the steam cleaner has been in use) for the appliance to cool down. Slowly give the cap only a half turn and wait for the hissing (if any) to completely stop. The hissing sound may be present due to residual pressure not released while holding the steam lever down.
- D. Carefully press the cap, unscrew it and follow process outlined in Step #1, page 8.

DETERGENT COMPARTMENT

- A. The separate detergent compartment can be filled by pressing the release button and detaching the tank.
See Step #2, page 9.

HOW TO USE THE STEAM CLEANER

MAINTENANCE

NOTE: Please ensure the steam cleaner has been unplugged from the power source and cooled down before any cleaning and maintenance is carried out.

- Always empty any excess water from water tank after each use. This operation will prolong the life of your appliance.
- Always ensure the unit has cooled before putting it away in a cool, dry place.
- To ensure the highest level of operation over a long period of time, it is recommended that the water tank be rinsed out with water at least once a month to clear out any water calcification accumulated. Do not use vinegar or other substances to remove lime scale deposits.
- To clean, fill with one measure of water (using the measuring cup included), replace cap and shake your steam cleaner to loosen any lime scale deposits. Remove cap and empty water from tank.

WARNING: Do not immerse your steam cleaner in water.

HOW TO USE THE STEAM CLEANER

NOTE: This appliance is not intended for use by persons with reduced physical, sensory, or mental capabilities, or lack of experience and knowledge, unless they have been given supervision or instruction concerning use of the appliance by a person responsible for their safety.

Children should be supervised to ensure that they do not play with the this appliance.

TECHNICAL SPECIFICATIONS

Voltage:	100-120V, 60 Hz
Power:	1200 Watts
Tank capacity:	480 ml. / 16.3 oz.

WARRANTY

This product has a warranty for 1 Year from provable date of purchase against defects in material and workmanship. During this period such defects will be repaired, or the product will be replaced at no charge. This warranty does not cover damage caused by misuse, negligence or improper installation. Warranty is also invalid in any case that the product is taken apart or services by an unauthorized service station.

TO CLAIM

Purchaser must receive a Return Authorization Number by calling our service center at 1-877-678-6232.

Once your return has been authorized, please send your package, prepaid postage, with a copy of your proof of purchase. You will also need to enclose a letter explaining the nature of your issue in detail. Please allow 2-4 weeks for return shipping.

Smartek USA Inc.
12 Hinsdale Street, NY 11207
1-877-678-6232

The Sunbeam® logo and Sunbeam® are registered trademarks of Sunbeam Products, Inc. used under license.

SMR030716

